



## Florida Department of Transportation

RON DESANTIS  
GOVERNOR

2198 Edison Avenue  
Jacksonville, Florida 32204-2730

KEVIN J. THIBAUT, P.E.  
SECRETARY

**For Immediate Release**

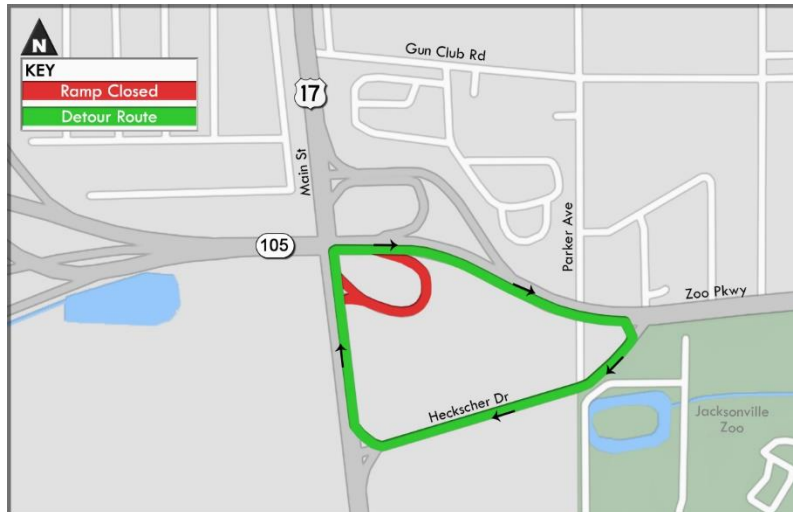
October 8, 2021

**Contact: Debbie Delgado**

(904) 476-7138 | [debbie.delgado@dot.state.fl.us](mailto:debbie.delgado@dot.state.fl.us)

### Zoo Parkway Eastbound Ramp to Main Street Closed October 11 through October 18

**JACKSONVILLE, Fla.** – The Zoo Parkway (State Road 105) eastbound ramp to Main Street (U.S. 17) will be closed Monday, October 11 at 7:30 a.m. through Friday, October 18 at 7 p.m. weather and unforeseen circumstances permitting. The five-day closure is needed for widening and guardrail work related to the Zoo Parkway resurfacing and improvement project. Main Street traffic from eastbound Zoo Parkway will detour via Heckscher Drive.



Digital message boards and signs will be in place to direct drivers through the respective detours.

Stay informed about lane closures and roadwork in your area by following FDOT District 2 at [@MyFDOT\\_NEFL](https://twitter.com/MyFDOT_NEFL) on Twitter or at [MyFDOTNEFL](https://www.facebook.com/MyFDOTNEFL) on Facebook.

###

*Improve Safety, Enhance Mobility, Inspire Innovation*  
[NFLRoads.com](http://NFLRoads.com) | [@MyFDOT\\_NEFL](https://twitter.com/MyFDOT_NEFL) | [Facebook.com/MyFDOTNEFL](https://www.facebook.com/MyFDOTNEFL)

The Florida Department of Transportation's mission is to provide a safe transportation system that ensures the mobility of people and goods, enhances economic prosperity, and preserves the quality of the state's environment and communities. The department is committed to building a transportation system that not only fits the current needs of Florida's residents and visitors, but also enhances mobility throughout the state to accommodate its consistent and rapid growth. The unique nature of the Sunshine State and its year-round warm climate provides numerous opportunities to achieve the department's mission through multiple transportation modes including highways/streets, air, rail, sea, spaceports, transit, and the ever-expanding deployment of bicycle & pedestrian facilities.